

# Carbonite® Migrate

## Making data and workload migrations simple

### Overview

Carbonite® Migrate quickly and easily migrates physical, virtual and cloud workloads over any distance with minimal risk and near-zero downtime. The streamlined process automates and consolidates numerous steps, which are otherwise manual and prone to human error, into just a few simple tasks, reducing the amount of work you need to do to reach your migration goals.

### Challenges with data and workload migrations

#### Time-consuming, risky and resource-intensive

The potential for downtime and data loss prevents many organizations from undertaking data migrations. Moving data and workloads can be painful, but it's often unavoidable. Migrations are often necessary due to mergers or relocations, hardware, software and application upgrades and moves to the cloud.

Nevertheless, organizations often avoid making these necessary changes due to:

- Time and money investment in IT resources
- Complexity of the project
- Associated downtime
- Risk of data loss or corruption
- Application performance issues

### Seamlessly migrate your data and workloads

#### Migrate from anywhere to anywhere: physical, virtual or cloud

The simplicity and repeatability of Carbonite® Migrate enables IT to switch platforms – including to, from and between public clouds– without impacting system availability. It also frees IT from platform lock-in and allows you to be more agile and flexible with IT investments. It includes

- Automated and orchestrated workflows
- Migration between any combination of physical, virtual and cloud-based platforms to or from any geographic location
- Scalable, continuous replication, with minimal performance or bandwidth impact to prevent downtime
- Easy, non-disruptive testing
- Data security with AES 256-bit encryption
- Scalable solution, from a single server to thousands of servers in multiple datacenters

### Benefits

Carbonite® Migrate automates data migration across physical, virtual and cloud platforms, storage types and operating systems with minimal risk.

- Structured, repeatable migration with near-zero downtime
- Highly automated process that eliminates common risks and streamlines migrations
- Increase cost-efficiency by spending less on data storage
- Freedom from lock-in to a specific cloud, hypervisor or hardware

*"Carbonite® Migrate is very fast and reliable. Our migration process is expedited and [...] downtime for our customer is practically nonexistent."*

- Dino Bordonaro, CEO, BORDONARO IT

## How Carbonite Migrate removes the risk of data migrations

### Centralized administration

Carbonite® Migrate orchestrates your migrations, regardless of source or target, from the initial discovery of your systems to provisioning target VMs and ultimately cutting over. The solution uses real-time, byte-level replication to create a replica of the data, applications, database or complete server being migrated. The replica is kept in sync, mirroring changes such as permissions, attributes, file names, deletions and encryption settings.

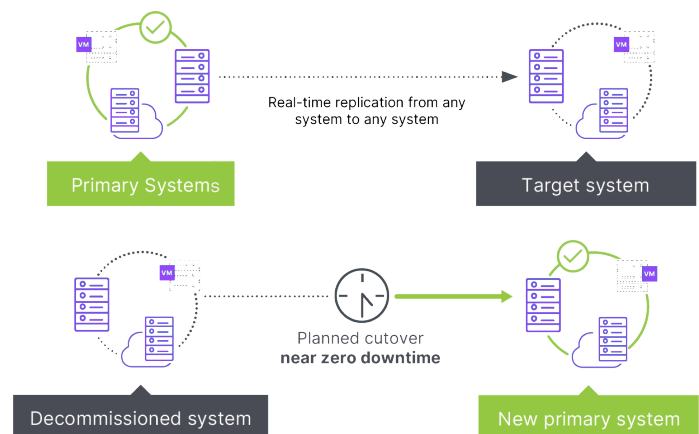
### Streamed replication from anywhere to anywhere

Carbonite® Migrate replicates the source system to the target, using AES 256-bit encryption to ensure security. Carbonite replication maximizes bandwidth efficiency, sending small chunks of data, incorporating multiple levels of compression, and enabling bandwidth throttling. End users can continue working on the source system until the final cutover.

The target server can be validated, and cutovers can be tested anytime without disrupting production systems and business operations.

### Cutover to your new system in minutes

Cutover automation is available and cutover downtime is limited to seconds or minutes. If reverting to the original system becomes necessary, the execution is straightforward. The process is repeatable and predictable whether managed through the unified console, automated through scripting or integrated with third-party tools.



## Supported platforms

### Operating systems:

- Microsoft Windows Server
- Red Hat Enterprise Linux
- Oracle Enterprise Linux
- CentOS
- SUSE Enterprise Linux
- Ubuntu

### Target environments:

- Amazon Web Services (AWS)
- Google Cloud
- Microsoft Azure Stack
- Microsoft Azure Classic
- Microsoft Azure Resource Manager
- Microsoft Hyper-V
- VMware vSphere
- VMware vCloud Director
- VMware ESXi

Carbonite Migrate is part of your cyber resilient solution. Being cyber resilient means being able to withstand and quickly recover from cyberattacks and accidental data loss. Together, Carbonite + Webroot provide you a full range of cyber resilience solutions to keep your data secure and protected, so you can play and work online without worry. Our security and backup solutions make cyber resilience simple.

Learn more at: [carbonite.com](https://carbonite.com)

### About Carbonite and Webroot

Carbonite and Webroot, OpenText companies, harness the cloud and artificial intelligence to provide comprehensive cyber resilience solutions for businesses, individuals, and managed service providers. Cyber resilience means being able to stay up and running, even in the face of cyberattacks and data loss. That's why we've combined forces to provide endpoint protection, network protection, security awareness training, and data backup and disaster recovery solutions, as well as threat intelligence services used by market leading technology providers worldwide. Leveraging the power of machine learning to protect millions of businesses and individuals, we secure the connected world. Carbonite and Webroot operate globally across North America, Europe, Australia, and Asia. Discover cyber resilience at [carbonite.com](https://carbonite.com) and [webroot.com](https://webroot.com).

© 2022 OpenText. All rights reserved. OpenText, Carbonite, and Webroot are each trademarks of OpenText or its subsidiaries. All other trademarks are the properties of their respective owners. DS\_080822

**CARBONITE® + WEBROOT®**  
OpenText Security Solutions