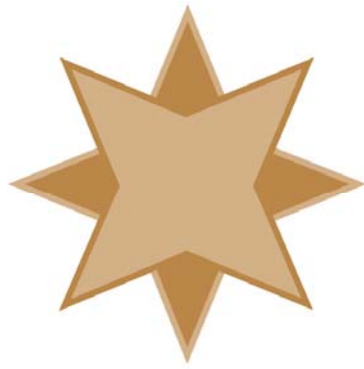


Configuring AAP Data Sources

A White Paper From



**GOLDSTAR
SOFTWARE**

www.GoldstarSoftware.com

For more information, see our web site at
<http://www.goldstarsoftware.com>

Configuring AAP Data Sources

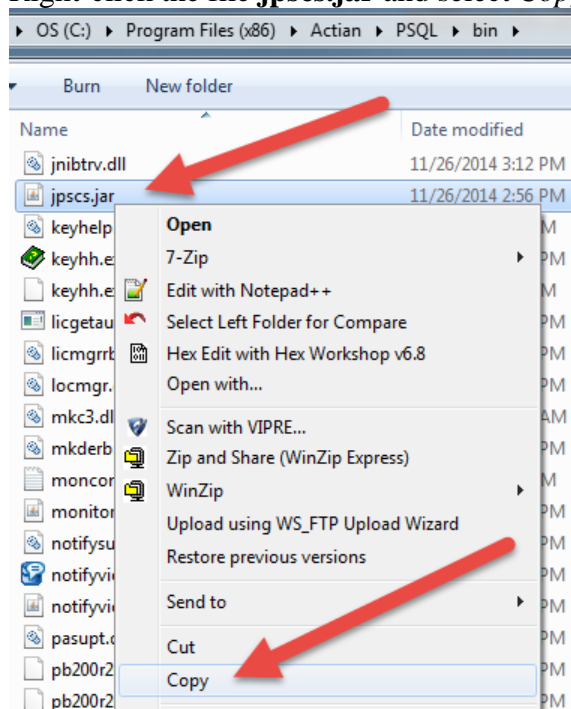
Last Updated: 09/23/2015

Before starting to work with the Actian Analytics Platform (AAP) and the accompanying Vector database, you will need to configure the AAP Actian Dataflow interface (also known as *KNIME*) to see your databases (both PSQL and Vector). These instructions have been created to help you get set up as quickly as possible.

Link Actian Dataflow (KNIME) to PSQL

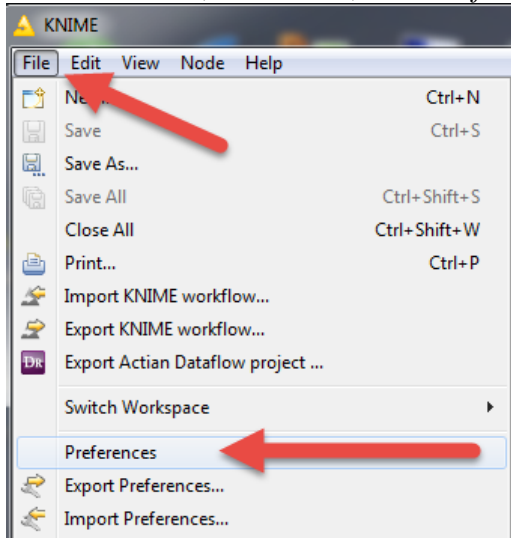
Before Actian Dataflow (KNIME) can interact with PSQL, it must know about the PSQL database engine environment. The following manual steps need to be done one time on your computer to accomplish this feat.

1. Start a Windows Explorer window and navigate to this folder:
C:\Program Files (x86)\Actian\PSQL\bin
2. Right-click the file **jpscs.jar** and select *Copy*.

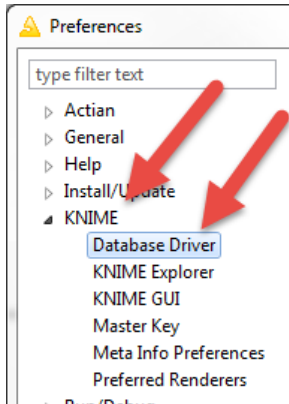


3. Navigate to this folder:
C:\Program Files\Actian\AnalyticsPlatformAP\knime_2.9.0\jre\lib\ext
4. Right-click the folder and select *Paste*.
5. Launch the Actian Dataflow (KNIME) environment.

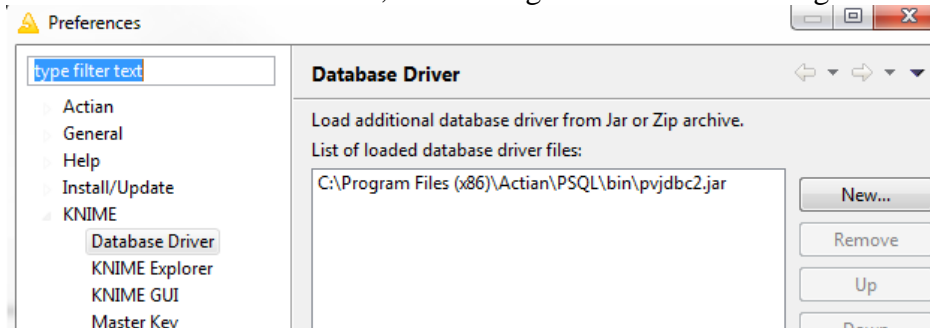
- From the menu, select *File*, then *Preferences*.



- From the tree structure, select *KNIME*, then *Database Driver*.



- Click *New* to add a new driver file, then navigate to this file:
C:\Program Files (x86)\Actian\PSQL\bin\pvjdbc2.jar
- Click *OK* to select this driver, then *OK* again to close this dialog box.

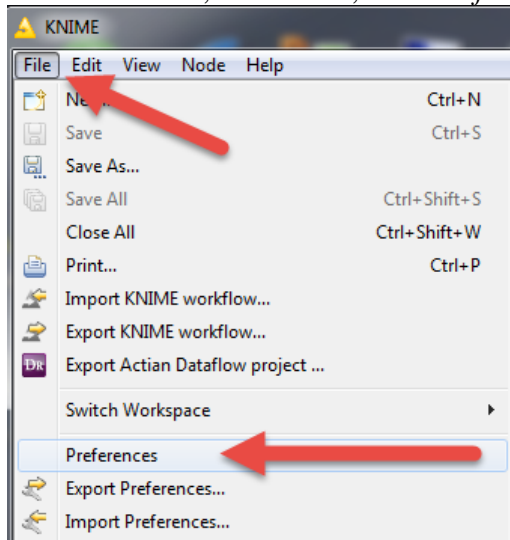


- Exit the Actian Dataflow (KNIME) environment completely. (If you do not shut down the environment, it will not see the new driver correctly.)

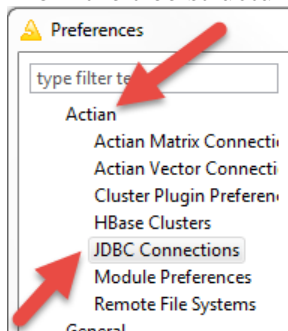
Configure Your Database in Actian Dataflow (KNIME)

Now that the Actian Dataflow (KNIME) environment knows how to talk to PSQL, you can define the databases that you wish to access. Follow these steps for EACH PSQL database you want to access from Dataflow.

1. Launch the Actian Dataflow (KNIME) environment.
2. From the menu, select *File*, then *Preferences*.



3. From the tree structure, select *Actian*, then *JDBC Connections*.



4. Click the *Add* button to get a new *JDBC Connection* dialog box. Enter the name of your connection first. For ease of use, you may wish to preface your database name with “PSQL-“, to make it clear that this is your PSQL database. Then, select the **com.pervasive.jdbc.v2.Driver** from the drop-down box.

5. For the URL field, use this exact format:

jdbc:pervasive://localhost:1583/<PSQLdatabasename>

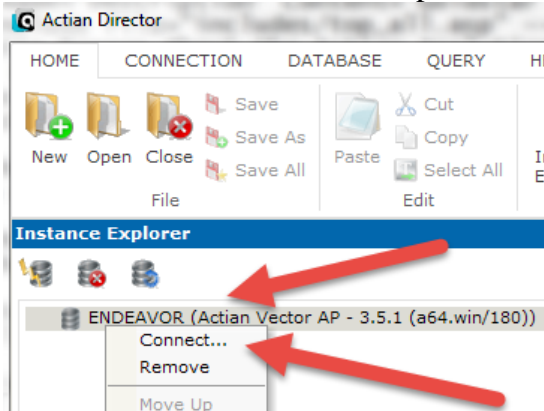
If you miss anything, even a colon, then the connection will not work properly. Enter a username and password (twice) as well. Note that these fields are **REQUIRED**. If your PSQL database does not use SQL Security at this time, then you may wish to enter AAP for both fields. (This name will be visible in the PSQL Monitor when AAP queries are running.)

6. Actian recommends next that you click on the *Test Connection* button and ensure that the connection works. However, we have had numerous problems with this screen where it appears to work (and shows “Connected successfully” when you test it), but trying to use the connection will fail because of errors in the data entry.
7. Click *OK* to close the dialog box.

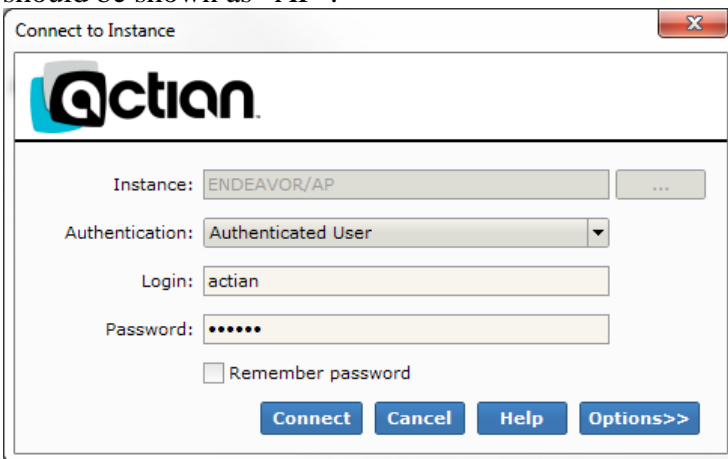
Create a New Vector Database

Before you can migrate data to Vector, you must create a new database in Vector.

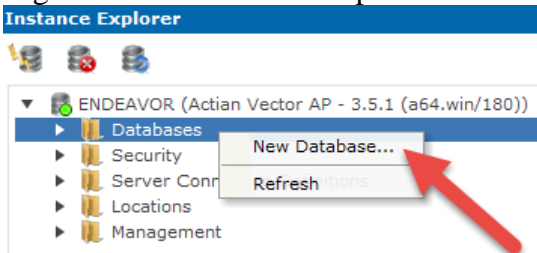
1. Start the *Action Director (x64)* application. Right-click the computer name listed there and select the *Connect...* option from the menu.



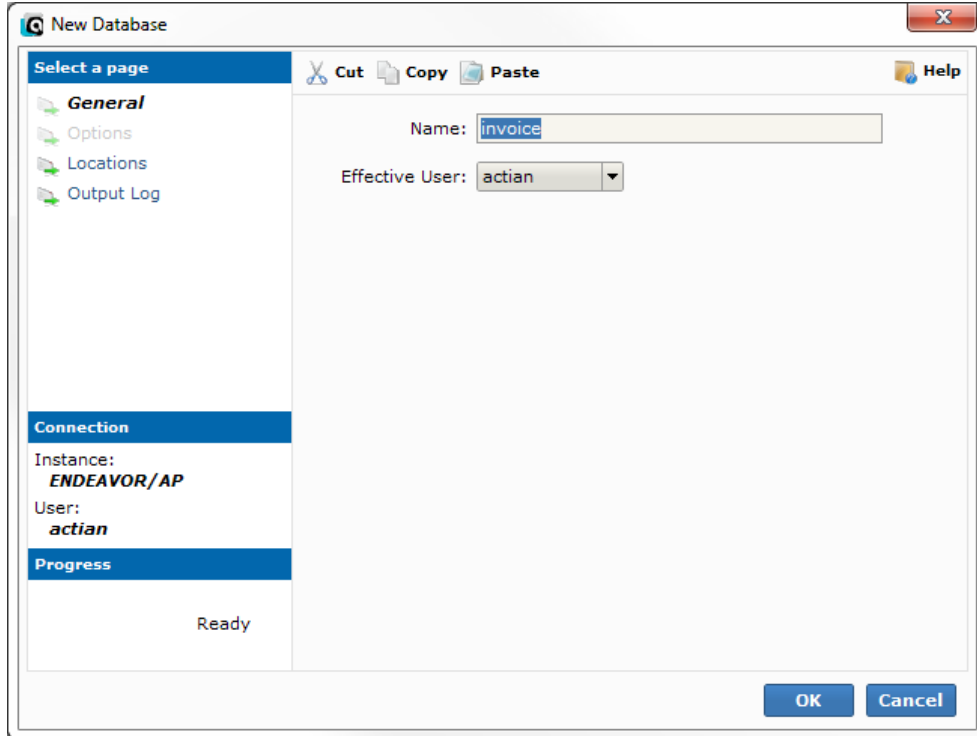
2. Enter the login credentials for your connection. If you followed the Action directions for installing AAP, then you likely have a *Login* of “actian” and a *Password* of “actian”. Click the *Connect* button to continue. Note the *Instance* line, especially the text after the slash, as this will be needed later. If you have followed the recommended Action installation procedure for AAP, then this should be shown as “AP”.



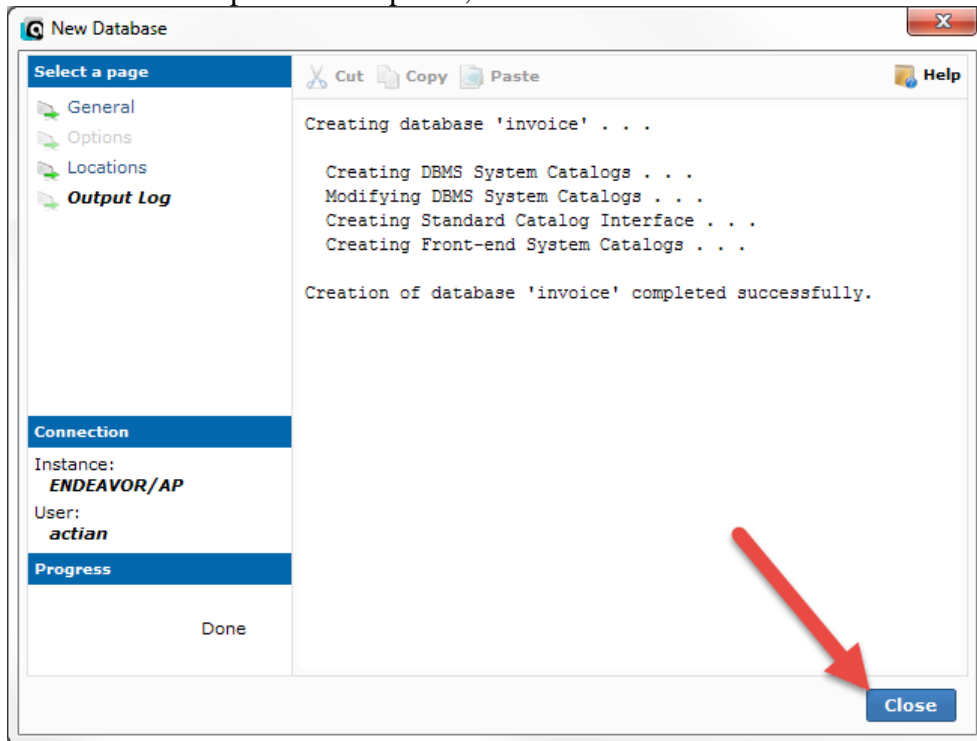
3. Right-click the Databases option select *New Database...*



4. Enter the name of the database (Vector will convert the name to lower case) and click the OK button.



5. When the Create process completes, click *Close*.



Your new database has now been created. It is completely empty and ready to be populated with tables and their data.

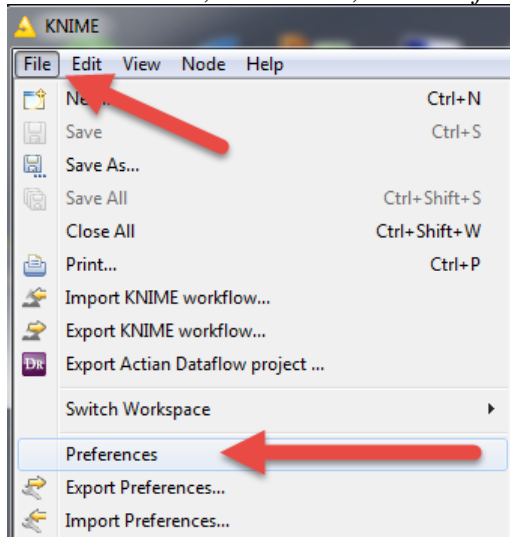
Information Provided By **Goldstar Software Inc.**

<http://www.goldstarsoftware.com>

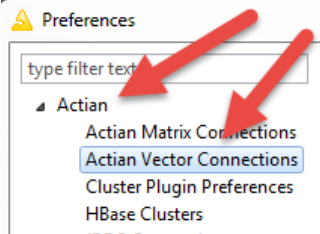
Create a New Vector Connection in KNIME

Now that the Vector database has been created, we need to tell the Actian Dataflow (KNIME) environment how to talk to the new database. You should do this for each Vector database you want to access.

1. Launch the *Actian Dataflow (KNIME)* environment.
2. From the menu, select *File*, then *Preferences*.

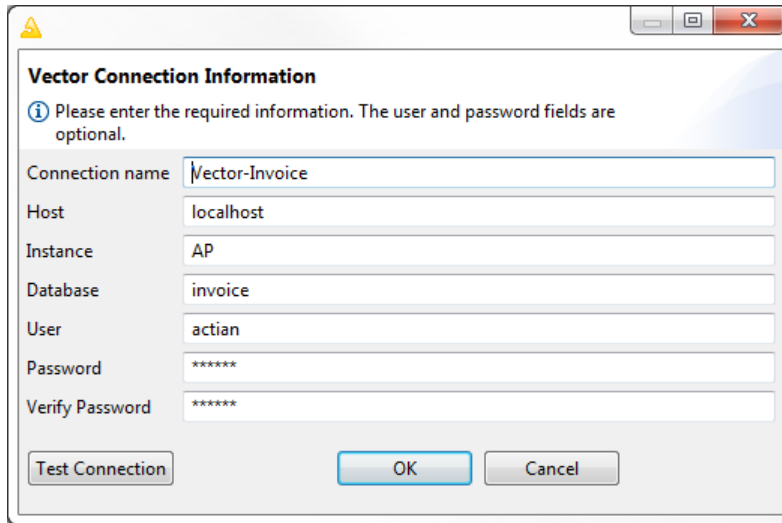


3. From the tree structure, select *Actian*, then *Actian Vector Connections*.



4. Click the *Add* button to get a new *Vector Connection* dialog box. Enter the *Connection Name* first. For ease of use, you may wish to preface your database name with “Vector-“, to make it clear that this is your Vector database. If you are working directly on the server, you can use **localhost** for your host name. For the *Instance* field, do not use the default of “VW”, but rather change this to “AP” (or whatever instance was shown while you were creating your database above). Provide the *Database* name, as well as the user credentials. Again, if you followed the recommended Actian install process, then your Vector instance may

have a *User* of “action” and a *Password* of “action”.



Vector Connection Information

ⓘ Please enter the required information. The user and password fields are optional.

Connection name: Vector-Invoice

Host: localhost

Instance: AP

Database: invoice

User: action

Password: *****

Verify Password: *****

Test Connection OK Cancel

5. Actian recommends next that you click on the *Test Connection* button to ensure that the connection is working properly.
6. Click *OK* to close the dialog box.

If you are not comfortable with this, we do offer a complete set of installation services to handle this for you. For more information, contact us at 1-708-647-7665 or visit our web site at <http://www.goldstarsoftware.com>.